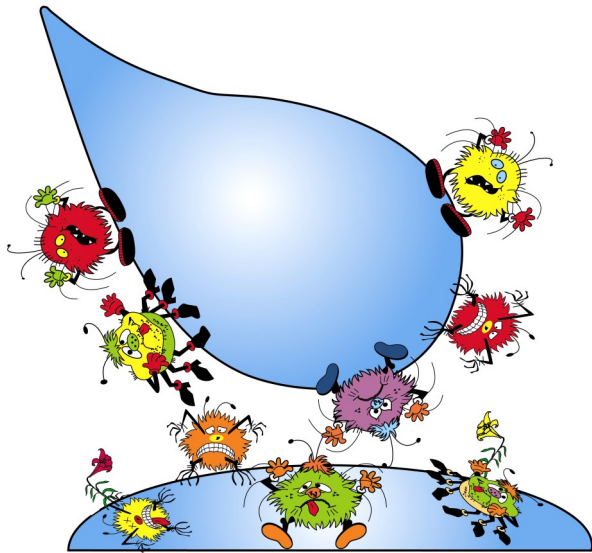


# sqWash®

# KILLS



## *E. coli*

and

## *Salmonella!*

**sqWash** is the perfect disinfectant for livestock facilities:

- Selectively and Effectively kills *E. coli* and *Salmonella*
- Kills *E. coli* and *Salmonella* where they hide!
- Non-hazardous to livestock, humans, and “friendly” bacteria
- Spray-on/Leave-on as a final rinse after washing facilities
- Long-lasting on wood and other surfaces
- Economical and cost-effective

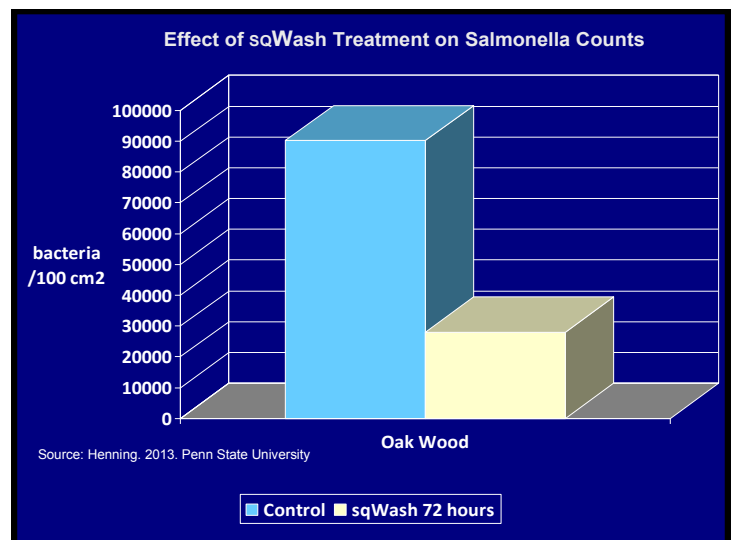
275 gallon totes



55 gallon drums

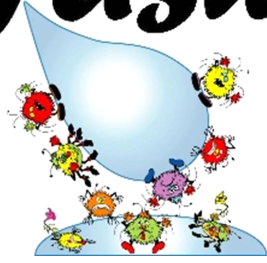


Nouriche Nutrition Ltd.  
2977 Highway K, Suite 305  
O'Fallon, MO 63368  
PH: 636.625.1884 Fax: 636.265.2707  
[www.Nouriche.com](http://www.Nouriche.com) email: [veaux@earthlink.net](mailto:veaux@earthlink.net)



## FAQs about...

# SQWash®



### How do I use SQWash in my facility?

**Final Rinse for Facilities** Using **SQWash** is simple! It is already diluted to a ready-to use concentration. After power-washing livestock facilities such as pens, chutes, or trucks, simply saturate the surfaces by spraying **SQWash** using a power sprayer or garden sprayer. There is no need to rinse because **SQWash** is non-toxic to livestock and will kill *E. coli* or *Salmonella* on the pen surfaces, thus reducing the likelihood of infection from these pathogens when new livestock arrive in your facility. **SQWash** kills pathogens where they normally are waiting for their next victims!

### How does SQWash kill *E. coli* and *Salmonella*?

**SQWash** contains an active ingredient which is extremely effective but also selective in killing *E. coli* and *Salmonella*. These pathogenic bacteria uniquely have an enzyme which enables them to use nitrate as an energy source. This is the reason that livestock have more health problems when nitrate is present in the water supply.

**SQWash** acts like a package bomb! When *E. coli* or *Salmonella* consume **SQWash**, they convert a compound in **SQWash** into one which is toxic only to these pathogenic bacteria thus killing them.

### Will SQWash hurt my livestock?

Livestock owners need not be concerned that their livestock might consume a small amount of **SQWash** by licking pens, gates, and other surfaces in their facility. The ingredients in **SQWash** are not toxic to livestock. In fact, the Agriculture Research Service of USDA has shown the active ingredients in **SQWash** effectively kills *E. coli* and *Salmonella* bacteria when fed to livestock as a method to prevent these pathogens on carcasses. No need to worry about residual amounts of **SQWash** being consumed by livestock because the dosage would be extremely small. USDA researchers fed an amount approximately equal to 30 ml **SQWash** per 100 lb body weight per day so, licking pens would be comparatively insignificant.

### How is SQWash Selective and Effective?

Most bacteria do not contain the enzyme that pathogenic *E. coli* and *Salmonella* contain. As a result, the pathogenic *E. coli* and *Salmonella* are targeted by an active ingredient in **SQWash**. Why is **SQWash** selective? Without the enzyme, the ingredient is non-toxic, thus so-called “friendly bacteria” are not affected.

**SQWash** is effective because both *E. coli* and *Salmonella* bacteria are susceptible to this now-toxic compound! Like a package bomb, these pathogens take the compound inside their cell, “open,” and convert the compound into a toxin...BOOM! They’re dead!

### Can I feed SQWash to my livestock?

**SQWash** is not toxic to livestock but some active ingredients are not approved for feeding livestock. In addition, feeding some ingredients for the final 30 days before slaughter is patented as a method to prevent *E. coli* or *Salmonella* contamination of the carcass. Feeding **SQWash** is not permitted because the ingredients are not yet approved and feeding for the last 30 days would be a patent infringement as well. We do not recommend feeding **SQWash** to livestock for these reasons.

### Are There Other Uses For SQWash?

**SQWash** could also be used to kill pathogenic bacteria on fruits, vegetables, and other potentially contaminated products. Outbreaks of *E. coli* or *Salmonella* in fruits and vegetables have become common. Research conducted at Pennsylvania State University showed that the active ingredients in **SQWash** were extremely effective in reducing *Salmonella* counts in poultry carcass meat, spinach and apples when sprayed on these products (shown below).

